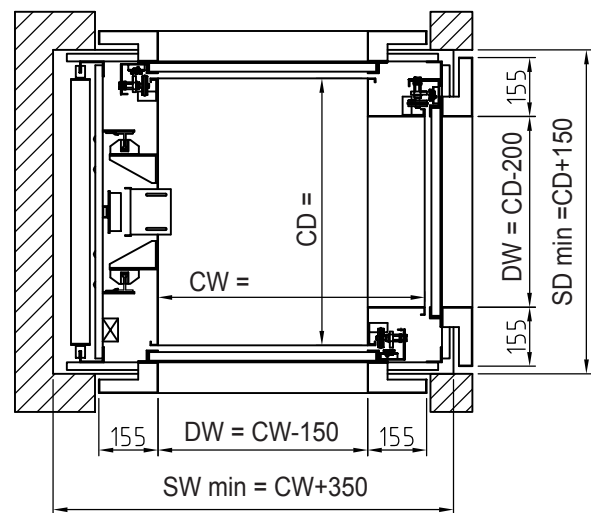
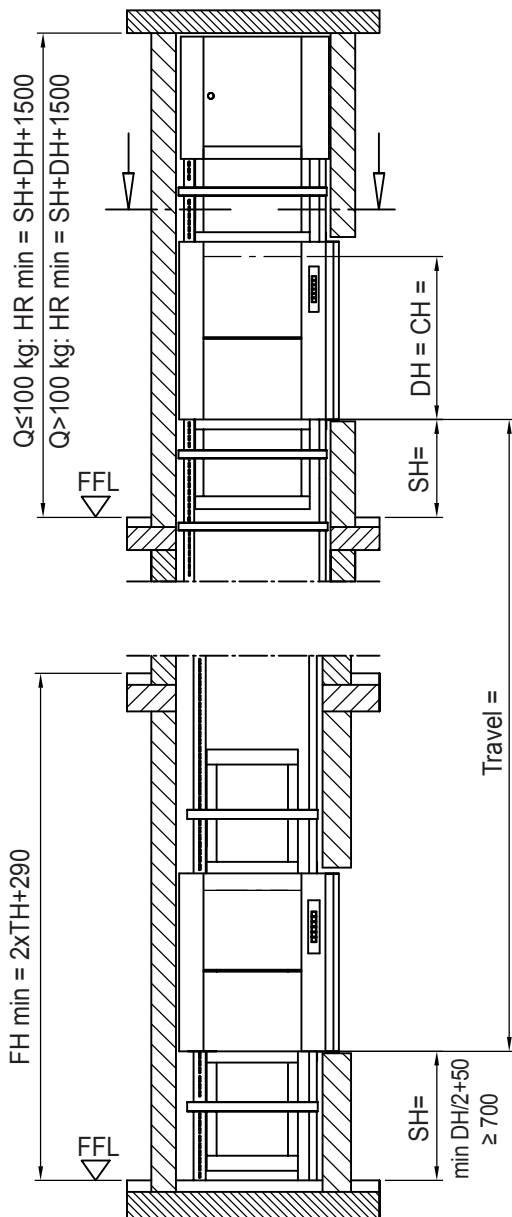


Well dimensions are absolute min. plumbed dimensions



↑
machine room access

ATTENTION:

Cabin protection reduces clear entrance openings resp. shaft sizes (see part 10)

Accessible rooms underneath shaft inadmissible

Cabin width and -depth available in increments of 50 mm
 Cabin height available in increments of 100 mm

- CW = cabin width **min. 600 - max. 1000 mm**
- CD = cabin depth **min. 700 - max. 1000 mm**
- CH = cabin height **min. 600 - max. 1200 mm**
- DW = door width = Cabin width - 150 cabin depth - 200
- DH = door height = Cabin height
- SH = Serving height = min. 700 mm resp. $DH/2 + 50$
- SW = Shaft width = plumbed min. dimensions
- SD = Shaft depth = plumbed min. dimensions
- HR = Headroom = clear height of top floor FFL - underside ceiling
- FFL = finished floor level
- FH = Floor to floor height on landing doors in line



Prices and specification see back side